



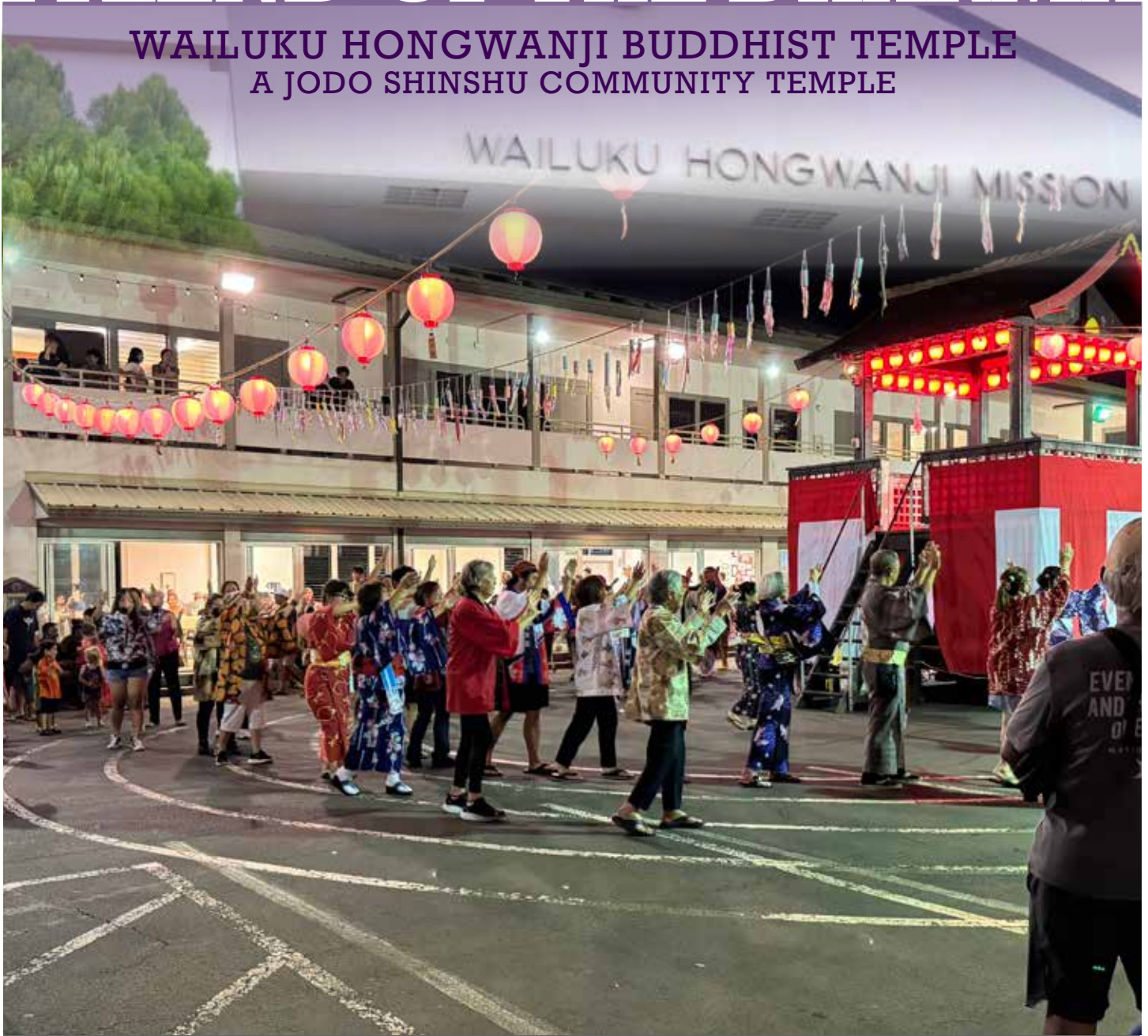
@wailukuhongwanji



JUNE 2025 // VOLUME 62

FRIEND OF THE DHARMA

WAILUKU HONGWANJI BUDDHIST TEMPLE
A JODO SHINSHU COMMUNITY TEMPLE



IN THIS ISSUE

**2025 Obon Building
Schedule Updates**

**Lahaina Hongwanji
Call for Pictures**

WAILUKU HONGWANJI MISSION
1828 Vineyard Street
Wailuku, HI 96793

U.S. POSTAGE
PAID
Permit No. 39
Non-Profit Organization
Wailuku, HI 96793

TEACHINGS FROM THE MINISTER

What Goes Around, Comes Around

*Reverend Shinkai Murakami**Namo Amida Butsu*

Cherished members and Dharma friends of Wailuku Hongwanji - how are you? I hope this message finds you in good health and spirits.

It's hard to believe we're already in the month of June. Time seems to pass so quickly these days. When I think of June, the phrase "June bride" often comes to mind, bringing with it fond personal memories. Minae and I were married on June 1, 1983, at the Honpa Hongwanji Los Angeles Betsuin. It's been 42 years now—a passage of time that still feels like a blink. Whenever we visit Los Angeles, we make it a point to return to the Betsuin where we were wed.

Over the past four decades, I've had the honor of officiating many weddings as a Hongwanji minister.

These moments have been among the most precious and fulfilling of my ministry. I often reflect on how different my path might have been had I remained in Japan. As many of you may know, in Japan it is still customary—even among Buddhists—for weddings to take place at Shinto shrines or Christian churches, while Buddhist temples are reserved primarily for funerals.

In addition to weddings, I've been fortunate to offer blessings and invocations at a wide range of meaningful events — from mayoral inaugurations and state legislative openings, to local ceremonies like the Maui Nisei Veterans Center's opening and the State AJA baseball tournament. Each occasion has been a humbling reminder

of the Dharma in daily life.

Sometimes people ask if I would recommend this path to the next generation. Would your children or grandchildren be interested in becoming Hongwanji ministers? If so, please don't hesitate to reach out—I would be more than happy to guide and train them. Am I strict? Perhaps—but always with compassion and the aspiration to help them grow into thoughtful, caring ministers.

Just last month, on May 10, I had the special opportunity to officiate a wedding at the bride's home. This bride was once a quiet and thoughtful student in my Japanese-language class at Pearl City Hongwanji Gakuen. When I received her email, memories came rushing back—her shy demeanor, the way she would quietly arrive with her mother, her growing confidence as she made friends, her diligent studies and bright spirit.

More than 21 years have passed since then. We hadn't seen each other in all that time, and yet she remembered me and asked me to officiate her wedding. Her message moved me deeply, and that same evening I replied with heartfelt thanks:

"I am truly honored and happy that you are asking me to officiate your and your fiancé's wedding. It is my



great honor and privilege. I am pleased to officiate your wedding.”

This touching reconnection reminded me of the profound karmic ties—go-en—that bind us across time and space. It brought to mind these words from Shinran Shonin in the preface of his Collected Works:

Ah, hard to encounter, even in many lifetimes, is the decisive cause of birth, Amida's universal Vow! Hard to realize, even in myriads of kalpas, is pure shinjin that is true and real! If you should come to realize this practice and shinjin (Entrusting mind and heart to Amida), rejoice at the conditions from the distant past that have brought it about. How joyous I am, Gutoku (foolish being) Shinran, disciple of Shakyamuni!

(Collected Works of Shinran, p. 4)

These words speak deeply to me. Through my time here in Hawai'i, I've learned so much from all of you—our temple members, fellow ministers, and Dharma friends. Sometimes, without even realizing it, we may plant the seeds of the Dharma in the hearts of those around us. And years later, those seeds blossom in unexpected and beautiful ways.

Officiating the wedding of a former student reminded me of how the Dharma comes full circle—how what goes around, truly comes around. I am deeply grateful for the opportunity and for this path as a Hongwanji minister. It is an honor to serve here at Wailuku Hongwanji Mission. I feel nothing but gratitude for the life I've been able to live alongside all of you.

With sincere appreciation, I express my gratitude in the most meaningful way I know — by reciting the Holy Name:

Namo Amida Butsu, Namu Amida Butsu, Namu Amida Butsu

ANNOUNCEMENT

First Two 2025 Temple Coins Awarded on Sunday, May 4th

Danny Topp

The 2025 Interdependence Coins have arrived! On May 4th, Danny Topp presented the first two coins to Sandy Hirata and Gwen Hiraga during morning service. Sandy, a member of the coin committee, suggested this year's theme of Interdependence. Gwen, with the support of the Buddhist Women's Association (BWA), helped create the photo featured on the front of the coin.

Now in its fourth year, the temple coin project continues to grow in meaning and popularity. Each coin serves as a small but lasting reflection of our shared values and the spirit of our sangha. This year, only 100 coins were made. They are \$10 each, with all proceeds going directly to support the temple. Thirty coins sold on the first day — so don't wait! Coins are available each Sunday morning at church or by contacting Danny at Danny.j.topp@gmail.com.

The Spirit of the Interdependence Coin:

The 2025 Interdependence Coin honors a fundamental truth of Buddhism: that all life is connected. We are not separate from one another, from the natural world, or from the shared path we walk as Buddhists. This year's coin reminds us that nothing exists in isolation. Our joys, challenges, and actions ripple outward — shaping the lives around us and the world we share.

The coin's design was created with the support of the Wailuku Hongwanji Buddhist Women's Association (BWA), whose initials appear on the coin as a sign of gratitude. The BWA has long embodied the spirit of interdependence through quiet leadership, tireless service, and deep compassion. Though their work often happens behind the scenes, its impact touches every part of temple life.

Whether placed on a butsudana, carried in a pocket, or given as a meaningful gift, the Interdependence Coin serves as a daily reminder: none of us journeys alone. May it inspire us to live each day with humility, gratitude, and a deep awareness of how we are supported — and how we can support others in return.



Thank you for your time, effort, and monetary donations. We are so fortunate to have your support! Through your donations, we continue to service multiple temple programs and work towards securing our future by accomplishing many goals in our 2030 Modernization Strategy. We are extremely grateful for any and all donations towards helping our congregation and advancing our community-minded efforts.



Pamela Miyagawa & Sharon Higa

EITAIKYO

Kenneth Oishi - *In memory of George & Kazuko Katsutani*

HANAMATSURI

Anonymous	Franklin & Guy Hamasaki
Troy Hashimoto	Jean Heselden
Margaret Honda	Hideo & Joyce Kawahara
Lillian Mangum	Machiko Moriyasu
Herbie Nishijima	Nelson Okumura
Patsy Saki	Janet Shimada
Toshiko Sugiki	Michael & Colleen Suyama
Marvin & Jocelyn Tengan	

GOTAN-E

Betsy Cardoza
Ed Fujinaka
Lydia Furomoto
Ronald Hamai &
Gail Iwamoto-Hamai
Ritsuko Lana Kato
Hideo & Joyce Kawahara
Lester Kunimitsu
Ellen Matsui
Dennis Ouchi - *In memory of*
Tomie Hirose
Linda Ann Unemori

KYODAN

George & Wendy Choi - *In memory of Katsumi & Fumie Hanada*
Theodore Edward Dodson
Lane & June Fujii - *In memory of Komao Mochizuki*
Daniel & Gail Kawahara - *In memory of Katsumi & Fumie Hanada*
Melvyn & Sylvia Kawashima - *In memory of Tsuruko Oki*
Roy & Lily Masuda
Maui United BWA
Kenneth Oishi - *In memory of Sadao Oishi & Tsuneo Yoneda*
Florence Tanaka - *In memory of Thomas Fujii, and Tokito Manta*
Raymond & Betty Toyama - *In memory of*
Kristi Toyama Shintaku, and Yoshio & Yukie Inaba
Henry & Betty Yamashiro - *In memory of*
Reverend Thom Nakanishi, Francis Tamotsu Kimoto, and
Thomas Toru Fujii

GRADUATION

Grant & Joyce Chun
Jonathan & Sharon Eno
Roy & Gwen Hiraga
Karla & Kirk Kurokawa
Gregg & Tiffaney Mukai
Gary & Jacqueline Murai
Christopher & Shelley Quipotla
Keith & Christy Sakamoto
Kyle & Ann Sakamoto
Edward & Joan Tamori
WHM Preschool

SOCIAL CONCERNS

Eric & Cathy Ikeuchi

ANNOUNCEMENTS

Help Wanted: PT Custodian and a Student Volunteer

Wailuku Hongwanji is seeking:

- A volunteer for 1 hour/week to take out 5–10 trash bags (10–35 lbs), ideally Fridays. Great opportunity for a high school student needing community service hours.
- A part-time custodian (up to 10 hrs/week) for cleaning the office, restrooms, Temple, Nokotsudo, and common areas. Flexible schedule possible.

For either position, please contact the office at (808) 244-0406, M–F, 8:00am–12:00pm, or submit a letter of interest.

If you would like to donate to any services or programs, please make checks payable to Wailuku Hongwanji Mission and send to Wailuku Hongwanji Mission at 1828 E Vineyard St. Wailuku, HI 96793. If you would like to volunteer time on any of the upcoming or ongoing projects, please contact the office at (808) 244-0406, Monday-Friday between 8:00am and 12:00pm.



MISCELLANEOUS DONATIONS

Anonymous – Altar flowers, Assorted snacks, Plastic straws, Brown paper bags, Assorted wish list items, Newspaper, Yard & campus maintenance, Dessert Plates, Plastic Forks

Richard & Amy Blue – Yard landscaping & No Trespassing Signs

Cubs – Temple yard & Campus cleanup

Dharma Strummers – Sunday service music

FT – Campus maintenance & Yard cleaning

Jeral & Karlynn Fukuda – Altar flowers

Alvin & Martha Fukunaga – Altar flowers

Terri Hamasaki - Dawn dishwashing detergent, Assorted Ziploc bags

Margaret Honda – Altar flowers, Nokotsudo & Flower cleaning, Office support

HOSHA Gang – Temple & Nokotsudo cleaning

Eric Ikeuchi – Campus maintenance

Calvin & Teri Kaneda – Altar flowers

Carol Mae Kurisu – Altar flowers

Machiko Moriyasu – Altar flowers and arrangements, Office support

Minae Murakami – Sunday service organist

Mike Nishimoto – Yard landscaping & maintenance

Celeste Rabang – Office support

Nancy Shimoda – Nokotsudo & flower cleaning, office support

Dale Sugiki – Sunday service organist

Toshiko Sugiki – Office support

Ed & Joan Tamori – Altar flowers & yard maintenance

Mary Tokumaru – Office support

Jeff & Laurie Fukushima Tsai - Peanut butter & jelly

Danny Topp - A/V support for services, workshops, meetings, & events

Linda Ann Unemori – Office support



No Trespassing Signs erected by Richard & Amy Blue

ANNOUNCEMENTS

Temple Wish List

We kindly request your support in contributing to our temple's wish list, which includes essential items to enhance our space and activities. Your generosity is greatly appreciated.

- Aluminum Foil
- 12 Cups and larger coffee filters
- Forever postage stamps
- 33 Gal. Trash Bags (No Flex Tech)
- 18 Gal. Kitchen Trash bag w/ draw string (No Flex Tech)
- Paper Towels
- Hashi (chop sticks)
- 7" Dessert Plates
- 12oz Bowls
- Coffee: Folgers or Yuban
- Clear Carton Packing Tapes
- General Use Masking Tapes (1")
- Ziploc bags (sandwich, quart, gallon)
- Duct Tape
- Napkins
- 15# Bag rice
- 9" Lunch plates
- Blue Painters tape
- Antibacterial hand soap
- 9 oz. Cold cups
- 9 oz. Hot cups



EDUCATION



WAILUKU HONGWANJI PRESCHOOL

144 Kaniela Street, Wailuku, Hawaii 96793 * Phone: (808) 244-9545
 Email: whpreschool808@gmail.com * Hours: Mon-Fri, 7:30am - 4:30pm

Jody Vinoray

We are excited to announce two wonderful achievements within our preschool family:

CONGRATULATIONS to Shante DelCastillo on her graduation from Baldwin High School! Shante has demonstrated exceptional dedication and hard work throughout her academic journey. We are so proud of her accomplishments and can't wait to see what the future holds for her. She will continue with obtaining her Child Development Associate to become a preschool teacher.



Kudos to Melissa Rapoza for earning her degree in Early Childhood Education! Melissa's commitment to fostering a love of learning in young children is truly inspiring. We are thrilled to have her expertise and passion as she continues to make a positive impact in the lives of our little ones.

Please join us in celebrating these remarkable milestones and wishing Shante and Melissa all the best in their future endeavors.

REGISTRATION

Regular Session:

August to May

Summer Session:

June to July

Closed during public school holidays and breaks, except teachers' institute day and teachers' end-of-semester day

Contact Information:

Phone: (808) 244-9545

Email:

whpreschool808@gmail.com

Site:

<https://www.wailukuhongwanji.org/index.php/>

ANNOUNCEMENTS

Join Our Temple Community Today!

Join us at Wailuku Hongwanji and become a cherished member of our temple community! We embrace diversity and welcome individuals and families from all backgrounds with open arms.

Membership: Support our shared spiritual journey by becoming a regular gojikai member through annual dues; your contribution ensures the vitality of our community.

Financial Support: Everyone's circumstances are unique. If dues present a challenge, reach out to discuss a rate that works for you. Your presence matters most, and we're happy to accommodate.

Ohana: Joining our ohana enriches your spiritual journey. Attend services, events, or activities to experience our vibrant community firsthand.

Membership Benefits: Enjoy special rates for temple programs, facility rentals, and a voice in decision-making at meetings. Embrace the warmth of community and join us today!

EDUCATION

Learning, Culture, & Community: A Year at Gakuen

Eri Nomura

As the school year comes to a close, Wailuku Hongwanji Gakuen will celebrate with an Award Presentation Ceremony on May 29. We are so proud of all our students for their hard work, growth, and joyful spirit throughout the year!

Over the past few months, students and families participated in meaningful and fun activities. Mahalo to those who attended the recent information session for our upcoming fall break trip to Hokkaido, Japan. Sensei will be leading the group, and we look forward to this special opportunity to deepen our connection to Japanese language and culture.

We also enjoyed two hands-on cultural lessons. In April, students brought back a crowd favorite—Spam musubi—by popular demand. Then, in May, they tried their hand at making Osaka-style okonomiyaki, a savory Japanese pancake with flour, salt, water, Spam,

chow fun noodles, tenkasu, and cabbage. The experience introduced students to a beloved Japanese comfort food while offering a window into its rich culinary history.

Did you know? Okonomiyaki (お好み焼き) means “grill what you like.” Its roots trace back to the Edo period and evolved into the dish we know today during and after World War II, when food shortages led people to make hearty, customizable pancakes from flour and whatever ingredients were on hand. In Hiroshima, the dish took on a layered style, often including cabbage, bean sprouts, and noodles. Okonomiyaki became more than just a meal, it symbolized resilience and rebuilding, especially in postwar Japan. Today, both the mixed Osaka-style and layered Hiroshima-style remain regional favorites, each telling their own story of community and adaptation.

We're also happy to share

some exciting news: Gakuen students are invited to a live taiko performance by Zenshin Daiko at the MACC on June 7 at 7:00 p.m.! Thanks to the generosity of Mr. Anthony Jones, owner of Zenshin Daiko, admission is free for all Gakuen students. Gakuen will also subsidize 50% of admission for parents. If you're interested in attending, please contact Murakami-sensei.

Finally, we offer our deepest gratitude to Kyoko-sensei, who will be retiring at the end of this school year. Her passion and dedication (熱意と努力, netsui to doryoku) have inspired generations of students. Her guidance, kindness, and steady presence have left an indelible mark on our program. She will be greatly missed.

Mahalo for another wonderful year at Gakuen. We hope to see you at the Awards Ceremony, and we wish everyone a safe, restful, and joyful summer!



REGISTRATION

Regular Session:

August to May

Registration Openings:

Returning Students: May 20

New Students: June 6
(9:30-11:00am at WHM)

**Visit us at Maui Matsuri
(UHMC, Pilina Bldg.) for a
registration packet!**

Contact Information:

Email: shinkai528@gmail.com

Board Chair: erifant@gmail.com

EDUCATION

D.S. Makes PB&J Sandwiches with Maui Police Officers*Joan Tamori*

On May 4, the dharma school students enjoyed making over 100 peanut butter and jelly sandwiches as part of their community service project for “A Cup of Cold Water”, a non-profit Care-Van outreach program based at the Good Shepherd Episcopal Church. What was very special about this project was that the students and their families, and temple members made sandwiches alongside three officers of the Maui Police Department with the Faith in Blue program. MPD’s Faith in Blue program, “part of a national initiative, focuses on building stronger relationships between law enforcement and faith-based organizations with the community”. Lieutenant Audra Sellers, Sergeant Kaena Brown, and Officer Kalani Miles, were introduced during Sunday morning service and Lt. Sellers embraced the opportunity to speak to the congregation about the program, its goals, and about other services the police department offers to our community. Teachers Laurie Fukushima-Tsai and Sandy Hirata were chairs of this wonderful project teaching interdependence, compassion, caring, and dana.



Leis and gifts were presented to the Officers by DS students during Sunday service.



L to R: Officer Kalani Miles, Joan Tamori, Cooper, Lt. Audra Sellers, Kaden, Kai, Mackey Noguchi, Jaxon, Tate (between bread and hand), Sgt. Kaena Brown, and Ryan.



L to R: Sandy Hirata, Sophie, Sammy Takamura, Julie Petro, June, Joan Tamori, Krystle Beauchamp, Kora, and Laurie Fukushima-Tsai.



L to R: Tamara Manley, Lt. Audra Sellers, Jeff Tsai, Caden, Erik, Kellen, Sammy, Sophie, Rev. Murakami, Shari Osajima, Sgt. Kaena Brown, Officer Kalani Miles, Aaron, and Kawika Beauchamp.



L to R: Sandy Hirata, Lt. Audra Sellers, Emma, Risa, Officer Kalani Miles, Heleonahe, Eva, Farron Cabral, and Sgt. Kaena Brown.

ADULT ORGANIZATIONS

Buddhist Women's Association News

Gwen Hiraga

BWA members, along with members from other BWA units, participated in the Maui Matsuri Children's Festival event at Queen Kaahumanu Center on May 10th and made various origami that were given to the public. Thank you members for working the children and helping them fold the origami.

The BWA had its General Membership meeting on May 11th, and enjoyed the Mother's Day brunch prepared by the Scouts.

BWA members attended the Fujimatsuri service held on May 18th and enjoyed a delicious lunch following the service.

BWA sends condolences to the family of Ms. Elaine Shizuko Mori, Long-time BWA member, who passed away in March.

Happy Birthday to our members born in June: Carrie Fukuoka, Sharon Higa, Catherine Ikeuchi, Kyla Manley and Linda Unemori.



Members from Wailuku & Lahaina Craft Together



May 18th - BWA members of the Maui Choir, perform at the Fujimatsuri Service.



Apple Sweet Bread Pudding: Courtesy of Pat Tomita

- 1 (16 oz) round sweet bread loaf
- 1 block butter
- 1 (21oz) can Comstock Apple Pie Filling
- $\frac{3}{4}$ cup sugar
- $\frac{1}{2}$ cup raisins
- 5 beaten eggs
- 2 cups milk
- cinnamon for sprinkling

Break sweet bread into pieces and place in 9x13" pan. Spread apple pie filling over the bread. Sprinkle the raisins. Scald milk; add butter, sugar, and stir until melted. Cool slightly (so that eggs don't scramble) and mix in the beaten eggs. Pour this over the bread and apple filling. Sprinkle cinnamon over the top. Bake at 350 degrees for 30 minutes.



YOUTH ORGANIZATIONS

Sakura 4-H Clubs - The Clover Report

Sammy Takamura

In April the 4-H Maui County program held their annual Teach-in event on UH Maui campus. 4H members of all ages presented poems or demonstrations in front of an audience of peers, their families and judges.

Sakura 4-H girls from the Friends Forever and Lōkahi Girls shared a variety of recipes from making your own pizza, Caramel Apples, Japchae, Chocolate Lasagna, Disassembled Spam Musubi and science experiment for salad dressing. And the Aloha Girls took their turns at reciting their favorite poems while a few Shining Stars watched on in preparation for maybe their turn next year.

We would like to thank the host club, the Maui Girls, who did a wonderful job. Our girls learned a lot from this experience and also the pipe-cleaner flower making project to end the day was just in time for Teacher Appreciation Week.



Sophie and Nahe, from Lōkahi Girls, tie in their demonstration of emulsion with their Lava Lamp and Honey Vinaigrette Dressing.



Meiko, Kassidee along with Janie from Friends Forever give samples of their Acai bowls to their younger 4-H sisters from the Aloha Girls and Shining Stars.

ANNOUNCEMENTS

BOGO Krispy Kreme

Krispy Kreme BOGO cards are available in the temple office for \$25 each. With the card, members may purchase any dozen donuts at regular price and receive one dozen Original Glazed Donuts free—that is \$25 for two dozen! Please make check payable to Wailuku Hongwanji Mission.



YOUTH ORGANIZATIONS

Pack 40: From Rain Gutter Regattas to Rocket Science*Kawika Beauchamp*

Pack 40 held our annual rain gutter regatta in April. Congratulations to the 2025 champion, Oakley Ogata.



Dr. Kimble Poon lead the First Responder adventure where Cub Scouts learned about CPR and how to administer first aid.



Den Leader Craig Senter led the Earth Rocks adventure, which introduced our Cub Scouts to the exciting concepts in geology.



In March the pack learned to tie important knots and the science behind sodium bicarbonate chemical reactions that can release gas to power our canister rockets.

YOUTH ORGANIZATIONS

Troop 40 Does Mother's Day*Celeste Rabang*

Scouts cooked and served Mother's Day breakfast for our church members. They also handed out roses to all the mothers and grandmother's.



ANNOUNCEMENTS

Revised Multi-Purpose Building Design Concept

Michael Munekiyo

Wailuku Hongwanji's proposed Multi-Purpose Building is intended to replace the existing Old Language School and Judo Dojo Buildings. The initial building design concept provided for an approximately 2,880 square foot (sf) building, together with required site work and parking stalls. Cost estimates were recently prepared by Rider Levett Bucknall for two (2) construction scenarios: (a) wood-framed building and (b) steel-framed building. Those estimates resulted in a significantly higher construction cost than the Board of Directors had anticipated. There are a number of reasons for the higher costs, all related to external economic factors.

In order to bring the project into a cost range aligned with our anticipated fundraising capacity, as developed by our consultant (The Shain Group), the project has been reduced in scope. The Multi-Purpose Building will still serve in the same purpose (martial arts and meeting space), but on a smaller scale. The reduced project scope now calls for a building size of 1,600 sf (instead of the initially proposed 2,880 sf. building).

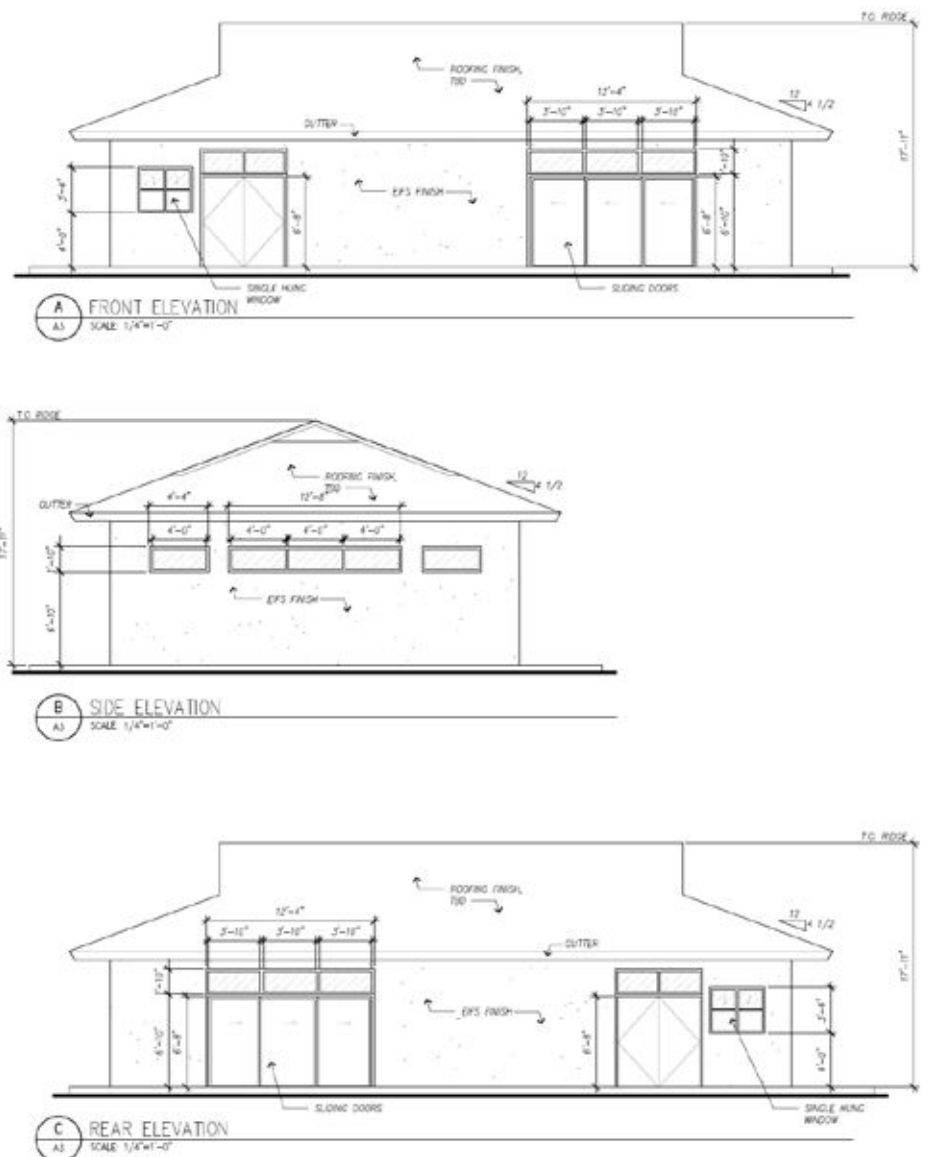
The revised site plan and elevations for the revised building concept are shown below. Questions regarding the revised concept may be sent to the Temple's email address: whm@wailukuhongwanji.org.

ANNOUNCEMENTS

Sharing Your Nembutsu Moments

Michael Munekiyo

The Honpa Hongwanji Mission of Hawaii has published *Sharing Your Nembutsu Moments*, a project coordinated by the Commission on Buddhist Education and the Buddhist Study Center Committee. This insightful book features stories and artwork from Dharma School students, ministers, and Sangha members across the state. It offers inspiration for living with gratitude, humility, and selflessness. Wailuku Hongwanji will be ordering copies from Honpa Hongwanji. Books will be available to WHM members for \$7.00 each while supplies last. To reserve a copy, please call the Temple office at (808) 244-0406.





ANNOUNCEMENT**Lahaina Hongwanji Rebuilding Update***Michael Munekiyo***Status Update**

The Honpa Hongwanji Mission of Hawaii's (HHMH) Lahaina Hongwanji Recovery and Rebuilding Committee continues work to facilitate the rebuilding of the Lahaina Hongwanji campus. While there are multiple hurdles to address the need to reestablish the Nembutsu teachings in West Maui, the Committee is making steady, consensus-based progress towards this goal. The following are noteworthy milestones.

1. Visioning and planning strategic sessions have been held with the Lahaina Hongwanji Sangha to receive input regarding their priorities for the future of the Temple.
2. The U.S. Army Corps of Engineers completed clean-up of the Lahaina Hongwanji property.
3. HHMH, through the Office of the Bishop, coordinates with the Federal Emergency Management Agency (FEMA) and Hawaii Emergency Management Agency (HiEMA) to obtain needed clarification regarding funding qualifications and criteria for Federal reimbursements. This process included site visits with FEMA, HiEMA, HHMH and Lahaina Hongwanji Sangha representatives.
4. FEMA recently completed its funding obligation process to provide HiEMA the Federal funding for the planning, design and construction processes.
5. HHMH retained the professional services of FAI Architects to conduct an initial feasibility and masterplan for the Lahaina Hongwanji campus.

The foregoing are but a few of the many steps required to advance the rebuilding process. While much more work is needed, the current effort of FAI Architects to prepare the rebuilding feasibility study is a focus of the Committee.

**Need for Lahaina Hongwanji Campus Photographs**

A key research item for the FAI study is the need to obtain pre-fire photographs of the Lahaina Hongwanji campus and buildings. With the exception of the former two-story school building on the campus, there are no architectural plans for the other structures lost in the fire. Recreating the historic character of the campus is a requirement for Federal funding. In this regard, the Committee is asking our Wailuku Hongwanji Sangha for any photographs you may have of Lahaina Hongwanji. The photographs will be useful in supporting FAI Architect's work to in the masterplan process.

If you do have photographs of any Lahaina Hongwanji campus building, may we ask that to provide a copy to the Wailuku Hongwanji Temple office. If your photos are in a digital format, they may be emailed to: WHM@wailukuhongwanji.org.

ANNOUNCEMENTS

Help Needed for BCA Temple Members Affected by the SoCal Wildfires

Michael Munekiyo

The Buddhist Churches of America (BCA) has established the Southern California Wildfire Relief fund in response to the catastrophic and deadly wildfires across Southern California. Monies raised will support BCA's Pasadena Buddhist Temple and other Southern District temples affected by the wildfires. The Pasadena Buddhist Temple was saved because of the quick actions of neighbors. Unfortunately, 16 Pasadena Sangha members lost their homes and a business. There have also been additional Sangha members in Southern California, including members of the West Los Angeles Buddhist Temple and Senshin Buddhist Temple, who have lost their homes and have been forced to evacuate.

Donations to the fund can be made through the following methods:

Go to the BCA website at: <https://bca.kindful.com/>

(scroll down on the SELECT A CAMPAIGN BOX and select DISASTER RELIEF – SOUTHERN CALIFORNIA WILDFIRE RELIEF)

You may also make donations by checks made payable to the BCAEF (please note WILDFIRES on the memo line) and mailed to:

Buddhist Churches of America Endowment Foundation
2140 Durant Avenue
Berkeley, CA, 94704

Your support for the BCA during this challenging time is greatly appreciated.

**ANNOUNCEMENTS**

Obon Mairi (Home Visitation) Offered to Members

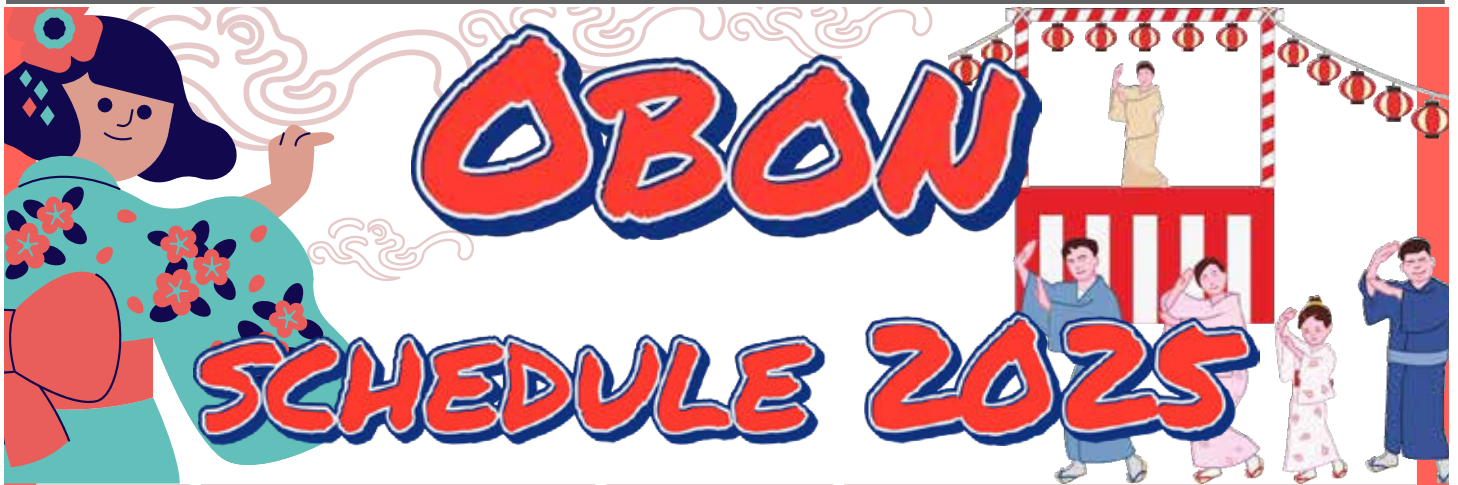
Members of Wailuku Hongwanji are invited to arrange their Obon Mairi (Obon home visitation) with Reverend Shinkai Murakami by calling 808-244-0406 to select a convenient date and time for his visit.

A cherished annual tradition, Obon Mairi offers temple members the opportunity to honor the spirits of their ancestors in a deeply personal and meaningful way. Each year, Reverend Murakami visits members' homes to conduct Obon services, celebrating this Buddhist custom that embodies reflection, gratitude, and connection.

The Obon tradition has evolved into a significant family reunion, where it is believed that the spirits of ancestors revisit the household altar. Families gather to express their appreciation for the enduring contributions of their ancestors, fostering a sense of harmony and celebrating the sacred bond shared among all living beings.

Members are kindly reminded to prepare for the visit by tidying their butsudan (family altar) and adorning it with fresh flowers.





Date	Temple	Service Dance	Information
June 7 (sat)	Puunene Nichiren Mission	6:00pm 7:00pm	871-4831 / 9 Ani Street, Kahului
June 14 (Sat)	Wailuku Shingon Mission	6:30 pm 7:30 pm	244-3800 / 1939 North Street, Wailuku sorapapa@yahoo.com
June 20 (Fri)	Wailuku Jodo Mission	6:00 pm 7:00 pm	244-0066 / 67 Central Ave., Wailuku
June 28 (Sat)	Kahului Jodo Mission	6:30 pm 7:30 pm	871-4911 / 325 Laau St., Kahului
July 11, 12 (Fri, Sat)	Mantokuji Soto Zen Mission	11th 6:00 pm Service only (No Bon Dance) 12th 6:00 pm Taiko / 7:00 pm Bon Dance (No Service) 579-8051 / 253 Hana Hwy, Paia / info@paiamantokuji.org	
July 18, 19 (Fri, Sat)	Kahului Hongwanji Mission	6:00 pm 7:30 pm	871-4732 / 291 S. Puunene Ave., Kahului kahuluihongwanjimission@gmail.com
July 25, 26 (Fri, Sat)	Makawao Hongwanji Mission	5:00 pm 7:00 pm	572-7229 / 1074 Makawao Ave., Makawao makawaohongwanji@gmail.com
August 1, 2 (Fri, Sat)	Wailuku Hongwanji Mission	6:30 pm 7:45 pm	244-0406 / 1828 Vineyard St., Wailuku whm@wailukuhongwanji.org
August 9 (Sat)	Lahaina Community Bon Dance (Lahaina Cannery Mall parking lots)	6:30pm	Lahaina Hongwanji Mission, Lahaina Shingon Mission and Lahaina Jodo Mission will participate
August 16 (Sat)	Paia Rinzai Zen Mission	6:00pm 7:00pm	579-9921 / 120 Alawai Rd, Paia monk.sen@rinzai-maui.org
August 23 (Sat)	Kula Shofukuji Mission	6:30 pm 7:30 pm	113 Puanani Pl, Kula mail@lahainashingon.org



HAWAII STATE LAY ASSOCIATION 62ND ANNUAL CONVENTION BULLETIN # 1



May 2, 2025

TO: All Temple Presidents, District Presidents, & State Vice-Presidents

FROM: State President: Russell Nonaka

Convention Co-Chairs: Rene Mansho, Rick Tabor

SUBJECT: 62nd Annual Convention Invitation

You are cordially invited to the 2025 Hawaii State Lay Association Annual Convention. Please extend this invitation to your temple members and leaders and encourage them to join in and participate in a gathering of fellow Jodo Shinshu practitioners. In addition to the usual business agenda, we will conduct workshop discussions that may lead to major operations & leadership issues affecting all temples.

Convention Theme: “LET’S BE THE AUTHORS OF OUR FUTURE!”

When: September 12-13, 2025

**Where: Fri. - 5:30 PM – Jikoen Hongwanji Social Hall
Sat –8:30 AM -Honpa Hongwanji Hawaii Betsuin**

**Cost: Regular Registration Fee, by July 16: \$75.00
Zoom Registration Fee, by July 16: \$45.00**

2025 Lay Convention Website: (Under Construction)

<https://sites.google.com/view/hsla2025convention/home>

Registration Deadline: July 16, 2025.

Resolution Submittal Deadline: Per our Bylaws, resolutions requiring financing shall be submitted 60 days (July 14) prior to the convention. All other resolutions shall be submitted 5 weeks (August 4) prior to the convention.

Email resolution drafts to: Dean Sakamoto at OahuLay@gmail.com.

Nominations for 2025 Deadline: July 31, 2025. A Nominations

Form which identifies the officer positions that each district shall provide a nominee will be included in Bulletin #2. Mahalo!

Our Deepest Sympathies

Kazuo Koyanagi (WA-GEN – Peaceful Face and Tranquility) age 98, of Wailuku, passed away on April 9, 2025.

Itsue Hanada (E-GAN – Eye of Great Wisdom) age 104, of Wailuku passed away on April 25, 2025.

Namo Amida Butsu

ACKNOWLEDGMENTS

Ofuse: *Thank You for Your Compassion*

Anonymous - *In memory of Mika Tsuruko Oki*
 Randy & Sue Arakawa - *In memory of Yukie Ng*
 Rhonda Hamasaki - *In memory of August Hamasaki*
 Alan, Helen, & Natalie Hasegawa - *In memory of Takae & Yaeko Hasagawa*
 Donna Jo - *In memory of Lance Jo*
 Arlene Koike - *In memory of Takae & Yaeko Hasegawa*
 Eileen Mori-Mishina - *In memory of Elaine Shizuko Mori*
 Michael & Lori Munekiyo - *In memory of Micah Koa Nobuo Saito*
 Vince Ng & Mark Malone - *In memory of Yukie Ng*
 Jan Yamamoto - *In memory of Jon Lee Nakano*
 Roger & Rene Yamaoka - *In memory of Yone Yamaoka*

Nokotsudo: *Thank You*

Alvin & Martha Fukunaga
 Ellen & Flemming Jorgensen
 Thomas & Winona Lau Hee - *In memory of Eddie Ansai*
 Winona Lau Hee - *In memory of Prudence Ota*
 Nancy Tomimoto - *In memory of Thomas Tomimoto*

MEMORIAL SERVICES

June Hoji Memorial Services

1st YEAR - 2024

DAY NAME

13 Richard Makino (SHO DO)
 26 Tomiko Yamagata (SHO KAN)

3rd YEAR - 2023

DAY NAME

02 Desiree Miyamoto (SHI ZEN)
 20 Elaine Hamasaki (JO RAKU)

7th YEAR - 2019

DAY NAME

12 Winifred Satsuki Nagoshi (JI SHO)
 21 Mihoko Kimura (SHO KO)

13th YEAR - 2013

DAY NAME

09 Mitsue Suzuki (E SHO)
 09 Stella Kikue Munekata (YUI GAN)
 20 Doris Sumire Hotta (JO KE)

17th YEAR - 2009

DAY NAME

14 Fusayo Inouye (GAN SHO)
 25 Teruji Eddie Ansai (SHO GYO)
 25 Tsurue Okubo (GU ZEN)
 26 Dr. Juji Hanada (JIPPO)

25th YEAR - 2001

DAY NAME

06 Hajime Inouye (JYO SHI)
 15 Masaiki Sueda (JYO KATSU)

33rd YEAR - 1993

DAY NAME

11 Toshio Munekiyo (SHO JAKU)
 17 Seijiro Matsuoka (JO SHIN)
 19 Matsue Nakahata (NEN KO)
 26 Taki Irie (JI SHU)
 26 Tsugio Oshiro (SHIN DO)
 29 Masano Fujita (MYO CHI)

50th YEAR - 1976

DAY NAME

20 Mitsue Kato (TESSHO SHINNYO)

To schedule a memorial service, contact the main office at (808) 244-0406, M-F between 8:00am and 12:00pm.

REFERENCES

Organization & Project Sign-Up Info

Interested in joining an affiliate organization, club, association, or looking to volunteer or donate to a project? Below is a list of sponsored organizations and ongoing or upcoming projects at Wailuku Hongwanji and their contact information. We look forward to seeing you and your family, and thank you in advance, for any monetary donations you make to support our efforts!

Altar Flower Donations	Call the main office at (808) 244-0406 or email whm@wailukuhongwanji.org
Buddhist Womans Association (BWA)	Call the main office at (808) 244-0406 or email whm@wailukuhongwanji.org
Boy Scouts	Call (808) 250-1891 or email msdel17@hotmail.com
Buddha Reads Book Club	Call the main office at (719) 200-7300 or email Buddha.reads@gmail.com
Choir	Call the main office at (808) 244-0406 or email whm@wailukuhongwanji.org
Cub Scouts	Call (808) 280-1299 or cubpack40@gmail.com
Dharma School	Call the main office at (719) 200-7300 or email whm@wailukuhongwanji.org
Dharma Strummers	Call the main office at (808) 244-0406 or email Wailuku.hongwanji.mission@gmail.com
4-H	Call the main office at (808) 244-0406 or email WHMSakura4H@gmail.com
Gakuen (Japanese Language School)	Call the main office at (808) 244-0406 or email whm@wailukuhongwanji.org
Hosha Day Clean-up (First Thursday of Month)	Call the main office at (808) 244-0406 or email whm@wailukuhongwanji.org
Junior Young Buddhist Association (Jr. YBA)	Call the main office at (808) 244-0406 or email whm@wailukuhongwanji.org
Judo Club	Call (808) 244-9094 or email rhiyakumoto@hawaii.rr.com
Karate	Call the main office at (808) 244-0406 or email whm@wailukuhongwanji.org
Kendo	Call (808) 244-2650 or email michael.sone@gmail.com
Office Support	Call the main office at (808) 244-0406 or email whm@wailukuhongwanji.org
Preschool	Call the Preschool at (808) 244-9545 or email whpreschool808@gmail.com
Facility Rentals	Call the main office at (808) 244-0406 or email whm@wailukuhongwanji.org
Sunday Morning Announcements	Call the main office at (808) 244-0406 or email Wailuku.hongwanji.mission@gmail.com
Volunteer Opportunities	Call the main office at (808) 244-0406 or email whm@wailukuhongwanji.org
Website & Facebook	Call the main office at (808) 244-0406 or email whm@wailukuhongwanji.org
Yard & Facility Maintenance	Call the main office at (808) 244-0406 or email whm@wailukuhongwanji.org

FRIEND OF THE DHARMA

Publishing Staff

Submission Deadline is the 15th of the month, prior to the publication date. Submit to robynmgarner@gmail.com

STAFF	
Editors	Robyn Garner Rev. Shinkai Murakami Frank Hamasaki Joan Tamori Michael Munekiyo Sharon Higa Celeste Rabang Gary Murai
Publishers	HELP WANTED
Website & Facebook	HELP WANTED & Donna Ikeuchi
CONTRIBUTING REPORTERS	
Acknowledgments	Pamela Miyagawa
BWA	Gwen Hiraga
Boy Scouts	Celeste Rabang
Buddha Reads	Danny Topp
Calendar	Sharon Higa
Choir	Joan Tamori
Cub Scouts	Kawika Beauchamp Paul Petro
Dharma School	Sandra Hirata Joan Tamori
Dharma Strummers	Danny Topp
4-H	Samantha Takamura
Gakuen	Rev. Shinkai Murakami
Jr. YBA	Donna Ikeuchi
Judo Club	Ronald Hiyakumoto
Karate	TBD
Kendo	Michael Sone
Preschool	Jody Vinoray
Sympathy	Sharon Higa

The Friend of the Dharma is published monthly. The opinions written by individual contributors are their own and do not necessarily reflect those of the Wailuku Hongwanji Buddhist Temple.

CALENDAR OF EVENTS

June / July 2025

Sunday	Monday	Tuesday	Wednesday	Thursday	Friday	Saturday
1 8am Sunday Service 10am BWA 120th Anniversary	2 Obon Mairi Begins 5:15pm Dharma Strummers	3	4	5 BWA Hosha Day BWA ACCW Delv. 7pm Troop Mtg.	6	7 Puunene Nichiren Mission Obon 6:00pm - Service 7:30pm - Dance
		66th State Ministers Assn Seminar				
8 8am Jr. YBA Sunday 9:30am BWA Mtng 3pm-6pm WHM Focus Group (Social Hall)	9 5:15pm Dharma Strummers	10	11 King Kamehameha State Holiday (Office Open) 5:30pm Obon Pract.	12 7pm Troop Mtg.	13	14 Wailuku Shingon Mission Obon 6:30pm - Service 7:30pm - Dance
15 8am Father's Day Service (D.S. Hosting Brunch)	16 5:15pm Dharma Strummers	17	18 5pm Kyodan Board Meeting via Zoom	19 Temple Office Closed BWA ACCW Delivery 7pm Troop Mtg.	20 Wailuku Jodo Mission Obon 6:00pm - Service 7:00pm - Dance	21 4-H Sewing Social
				68th State Jr. YBA Convention		
22 8am Sunday Service 68th State Jr. YBA Convention	23 5:15pm Dharma Strummers	24 6:30pm Cubs	25	26 7pm Troop Mtg.	27	28 Kahului Jodo Mission Obon 6:30pm - Service 7:30pm - Dance
29 8am Family Service	30 5:15pm Dharma Strummers	1	2 5pm Maui Memorial Park Obon Service	3 BWA Hosha Day BWA ACCW Delv. 7pm Troop Mtg.	4 Independence Day Holiday (Office Closed)	5
		Young Buddhist Internation CSE				
6 8am Sunday Service	7 5:15pm Dharma Strummers	8	9 5:30pm Obon Pract.	10 7pm Troop Mtg.	11 Mantokuji Soto Zen Mission Obon 6:00pm - Service	12 Mantokuji Soto Zen Mission Obon 6:00pm - Dance
		Young Buddhist Internation CSE				
13 8am Sunday Service 9:30am BWA Mtng.	14 5:15pm Dharma Strummers	15	16 5pm Kyodan Board Meeting via Zoom	17 BWA ACCW Delv. 7pm Troop Mtg.	18 Kahului Hongwanji Mission Obon 6:00pm - Service 7:30pm - Dance	19 Kahului Hongwanji Mission Obon 6:00pm - Service 7:30pm - Dance
20 8am General Clean Up & Yagura Construction (D.S. Hosting Event)	21 Omigaki Project 5:15pm Dharma Strummers	22	23	24 7pm Troop Mtg.	25 Makawao Hongwanji Obon 5:00pm - Service 7:00pm - Dance	26 Kupuna Aloha Luncheon Makawao Hongwanji Obon 5:00pm - Service 7:00pm - Dance
27 8am Family Service	28 5:15pm Dharma Strummers	29 6:30pm Cubs	30	31 7pm Troop Mtg.		